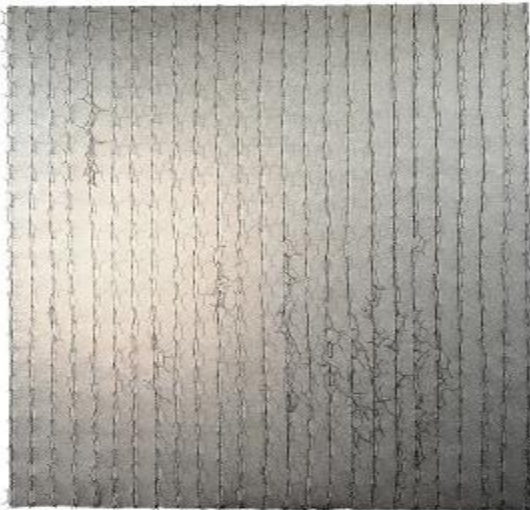


NEWSLETTER APRIL 2013

Dear Members,

With so much on this month, preparing for Open Studios, getting work into the Leamington Open and, of course, our own exhibition at Holy Trinity to prepare for and organise, this is a mini Newsletter, largely issued to remind you of forthcoming events. One new feature, however, is a focus on member's blogs. If you blog or tweet about your art, let us know! We also have a review of Mary Partridge's recent talk by Grace Newman.



Aberration – Katharine Barker

Newsflash!!!

Congratulations to AMA members who have had work accepted for this year's Leamington Open: *Katharine Barker, Paul Bark, Wendy Campbell-Briggs, Elizabeth Marsh, Neil Moore, Victoria Smith, Ray Spence, Jonathan Treadwell, and Tammy Woodrow.*

Katharine's successful piece was the work which featured in "On My Easel Now" in the AMA October Newsletter.



Jan Gay – "Catching the Wind". Jan is our speaker on the morning of 7th May

MEETINGS

MORNING MEETINGS.

10.00am. Baptist Hall, Chandos Street, Leamington Spa. Upstairs room via the side entrance. If you are late and the door is locked please press the bell. The meetings normally finish at approximately 12.15pm. Car Park opposite the Hall.

Morning of Tuesday 7th May. Jan Gay, painter.

Doors open, 10.00. Finish, 12.00 approx..

Jan's work is vivid and colourful. See her web site here, <http://www.jangay.co.uk>

Evening of Saturday 11th May. 7 –9pm

AMA Exhibition, private view, Holy Trinity Church, Beauchamp Avenue, Leamington Spa CV32 5RG.

The exhibition will run from Saturday 11th to Sunday 19th May.

Morning of Tuesday 4th June. Louise Claire, contemporary textile artist.

Doors open, 10.00. Finish, 12.00 approx.

See Louise's work here, <http://www.louiseclaire.co.uk>

Editors, Len Mackin and Katharine Barker

AMA PROGRAMME 2013

Evening of Wednesday 12th June.

Artist Lecture by Lucy Pratt, contemporary British painter.

7.00 for 7.30 at Victoria House, Willes Road, Leamington CV32 4PT.

See Lucy's colourful landscapes, still lives and recently produced restaurant kitchen scenes here, <http://www.lucypratt.com>

29th June to 14th July.

Warwickshire Open Studios. At the last count, 29 AMA members are taking part. See <http://warwickshireopenstudios.org> for more information.

Tuesday 10th September.

Evening event – to be confirmed.

Morning of Tuesday 5th November.

Artist talk by Penny Gildea, jeweller/enameller.

PLEASE TRY AND SUPPORT AS MANY OF OUR SPEAKERS AND VISITING ARTISTS AS YOU CAN!

AMA EXHIBITIONS

AMA @ HOLY TRINITY 2013

AMA's exhibition at Holy Trinity Church, Saturday 11th May to Sunday 19th May.

Saturdays 10.00am to 5.00pm, other days, 2.00 to 5.00pm.

Holy Trinity Church, Beauchamp Avenue, Leamington Spa CV32 5RG.

Private View (all welcome!), Saturday 11th May, 7.00 to 9.00pm



Arden's Deli-Café:

The next exhibitor at Arden's Deli-Café in Kenilworth will be Pat Carpenter. The change over, from Ann Cole's work, will take place some time in May.

Pat Carpenter – The Lady Detective

RETINA-1

A contemporary photography exhibition 24 - 27 May 2013 at Althorpe Studios & Gallery

Pete Wiseman, Jonathan Treadwell, Suminder Virk, Kieran McInerney, Marc Beacham, Michael Lightborne, Ryan Hughes and Tammy Woodrow (curator, tel 07964770596)

Private View Friday 24 May, 6.30pm onwards, all welcome
Open Sat 25, Sun 26 & Mon 27 May, 11-4, free entry, all works for sale

Althorpe Studios & Gallery, Unit 6, Althorpe Street, Leamington Spa, CV31 2AU



Retina – I

An exhibition of contemporary photography, including work by AMA members Jonathan Treadwell and Suminder Virk, curated by Tammy Woodrow, who will be curating our own AMA @ Holy Trinity exhibition.

Althorpe Studios, Leamington Spa CV31 2AU. 24th to 27th May

Leamington Open 2013

Royal Pump Rooms, Leamington Spa. Friday 3rd May to 14th July 2013.

Opening times: Tues, Wed, Fri, Sat 10.30am - 5pm. Thurs 1.30pm - 8pm. Sun & Bank Holidays 11am - 4pm. Mon Closed

Admission Free

For more information visit, <http://www.warwickdc.gov.uk/WDC/RoyalPumpRooms/Art+Gallery+and+Museum/>



moving music

Paintings & Drawings by Jane Williams
Artist in Residence Leamington Music



Artwork 'Phonola 6 for Tony'

3-7 May 2013

The Conservatory, Royal Pump Rooms
Leamington Spa CV32 4AA

Leamington Music
Festival Weekend

Exhibition open 3-7 May one hour before performances
www.leamingtonmusic.org for details of programme

Moving Music – exhibition of work by Jane Williams.

3rd to 7th May at the Pump Rooms, Leamington Spa. The exhibition is open for five evenings, for one hour before each of a series of concerts held as part of Leamington Music Festival Weekend.

For more information visit, www.leamingtonmusic.org

The Mayor of Leamington will open the Festival at 7pm followed by a performance at 7.30pm by

Sacconi String Quartet

David Campbell (clarinet)

playing music by Bridge, Britten and Bliss

AMA EVENING TALK—MARY PARTRIDGE

Mary Partridge

In her talk at Victoria House, Leamington Spa, Mary Partridge gave us a rare insight into the background of artistic development which led to her being the accomplished dust artist she is today.

Having created art for as long as she can remember alongside the ups and downs of family life, Mary's early work began with life drawing. Attending the Access to Fine Art Course at Warwickshire College changed all that. It opened her eyes to new artistic experiences, especially at the sculpture classes led by Mark Taylor. Touching things, construction, deconstruction and



creating art from almost anything turned Mary's work in a new direction.

After graduating from Birmingham City University Mary would often be found playing around with and constructing sculpture and installations from all manner of objects discovered gathering dust in her garage. A most memorable example was a piece created for the 'Safe House' exhibition in North Hall with art group 'The Edge' constructed from parts of a cot, chair and an ironing board.

Mary had always visited churches and had a particular fascination with Anglo-Saxon churches.

Using old maps and plans, she created different coloured pastel drawings depicting the growth and changes of these churches throughout the centuries. Recalling her Mother's stories of the war, one in particular made an impression on her work. Coming out from the air raid shelter after the bombing of Coventry cathedral, everywhere was covered in red dust from the sandstone of the buildings. Mary then used turmeric, cayenne pepper and other powders to create transient maps of churches and cathedrals on the floor, which reminded me of the strong colours often used by Anish Kapoor. Finally, Mary decided on talcum powder as she discovered its fine molecules helped stick it to the ground for longer. Mary was able to place her work on Coventry Cathedral outside The Herbert Art Gallery for Remembrance Day. She went back each week to create a new one over four weeks.

Having found a medium she loved, more work followed in the form of messages, often humorous, in public places. I particularly enjoyed 'Things Happen' outside Leamington Police Station and on a bridge 'Stomach in, Shoulders back'. Further developments in her practice, and a studio at Althorpe Studios, enabled Mary to create very large block printed canvases. These were arranged on the floor of All Saint's Church, Leamington



Spa for Heritage weekend.

Mary enjoys talking to people about her pieces and seeing their reactions to her work. Some people will walk straight over them as if they are not there and others will avoid stepping on them by walking around them. When created with talcum powder, women especially find them evocative as they sniff the air.

For Warwickshire Open Studios, word has spread of Mary's house and gardens. Visitors flock to see and are amazed by the abundance of art and artifacts in her house and her wacky garden, with a pond, chickens and a folly. She is opening her house again this year for open Studios so make a note to pay her a visit. Also she is exhibiting with contemporary art group 'The Edge' at the Electric Railway Museum at Baginton, another must see.

Mary's most recent activities involve negatives and church plans, and she is trying a new technique and seeing where it leads. We wait with excitement....

Grace Newman



Last month we asked.....

DO YOU BLOG, GOT SOMETHING TO TWEET ABOUT?

with the intention of reviewing and publicising your ventures into cyberspace.

So far only one person has replied (where are the rest of you?). So here is **Sheila Graham's blog**:

www.tipsforthepotter.blogspot.co.uk

Sheila's blog is an entertaining and frequently fascinating insight, not just into the world of the potter, complete with hot tips from kiln and wheel, but forms an everyday story of Leamington folk. She includes pictures of the garden, news of her husband's latest book, musical excerpts and glimpses of her holidays. Since beginning in 2011, the blog is now being read in 43 countries!

Highly recommended.

Let Katharine know if you would like your blogs, tweets etc included in future editions.

Katharine.texcons@btinternet.com



'KURT JACKSON – A ONE-MILE WALK', CHIPPING CAMPDEN GALLERY

(13 April - 5 May 2013)



The Financial Times described Kurt Jackson as, 'one of Britain's most compelling, contemporary painters'. Born in Dorset in 1961, he now lives near St Just, in Cornwall, and among his many commitments he has been Artist in Residence on the Greenpeace ship 'Esperanza', at the Eden Project and at the Glastonbury Festival.

He says:

"I often paint the open sea with no land visible: the last wilderness here is the sea. You can look out there to the Atlantic and there is no visible sign that we have done anything to it, although we know we have. That's the fascination I have with it, and why I paint it over and over again – big expanses of open sea and open sky. At the same time you can look at wilderness on a micro-scale, peering into the bottom of a blackthorn hedge where again there is no visible sign of the effects

of human activity. That can be equally exciting to me.

When I'm painting, I often try to get myself into a place where I'm totally surrounded by rocks on a beach or cocooned by gorse."

This exhibition in Chipping Campden provided an opportunity to see a large amount of his very recent work. It ranged from huge canvases incorporating sand, stones and webbing within the landscape, to small pencil drawings, watercolours, sculptures and large ceramic plates.

Although his work has an abstract feel to it, you can also see the influence of painters such as Turner. He is widely written about on the internet and his work is reproduced in books such as, "Kurt Jackson, a New Genre of Landscape Painting" and "Kurt Jackson Sketchbooks". If you love the Cornish coast, then you'll definitely like him.

Sheila Graham

CALLS FOR WORK

Open Exhibition – Call for Work

AMA has been approached by the Curator of **Weston Park, Shropshire** to let us know about their third **Granary Art Gallery Fine Art Open**. Entry forms to be returned by the 28th June, exhibition, 2nd to 29th August. Painting, printmaking, drawing, sculpture and photography are all welcome. There is a £15 per item submission fee and a 40% + VAT commission will be charged on sales. There will be a national prize of £2,000.

More information here, www.weston-park.com/granaryopen

LIFE DRAWING WORKSHOP

Saturday 4th MAY

At Shottery Memorial Hall (nr. Stratford-on-Avon)

10am – 4.00pm. £36

(inc. 10% discount for AMA members)

Includes paper, light refreshments and onsite parking



For details please contact:-

Neil Moore on 01926 420833

Or email: therealneilmoore@hotmail.com

FOR SALE: Etching/relief press, free standing with 20 inch bed. £200.

Please contact Liz Morris, 34 Church St, Hampton Lucy, Warwick. CV34 8BE. Tel. 01789 841716.

Please note that the seller is unable to provide transport.

Althorpe Studios & Gallery Paint-Making, Studio space & France.

Herman Jansen van Vuuren is an artist, paint specialist & engineer. He will be running four workshops where the participants will learn how to mix & make their own paint, and will take home their own-made paints, pastels & canvas.

We also have a new **studio space** in another building on Althorpe Street, it is an open-plan area which would suit between 4 & 8 artists sharing.

Away from Althorpe Street, we would like to point you in the direction of France and a **painting holiday** this summer in Limalonges tutored by **Ann Loscombe**.

Do contact us for further details -

Jonathan & Suminder althorpestudios@yahoo.co.uk

